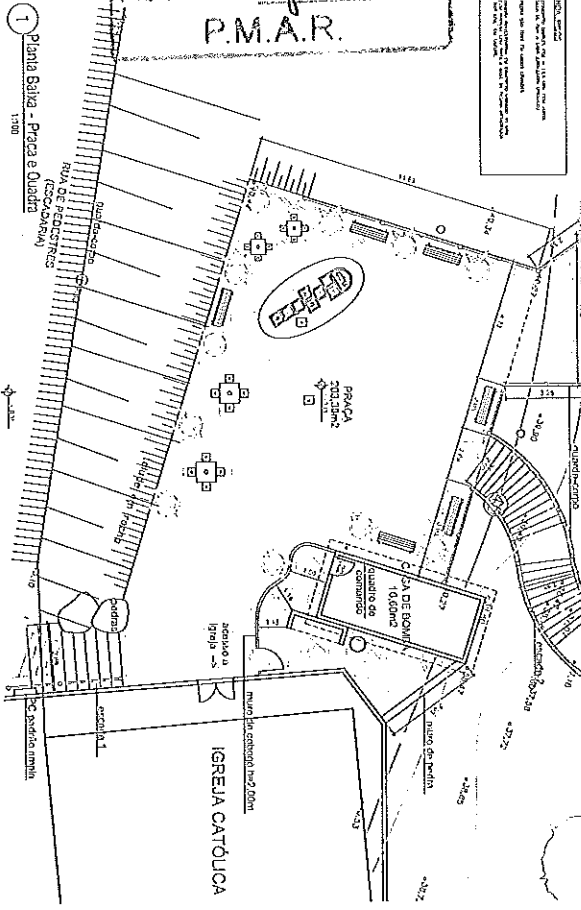
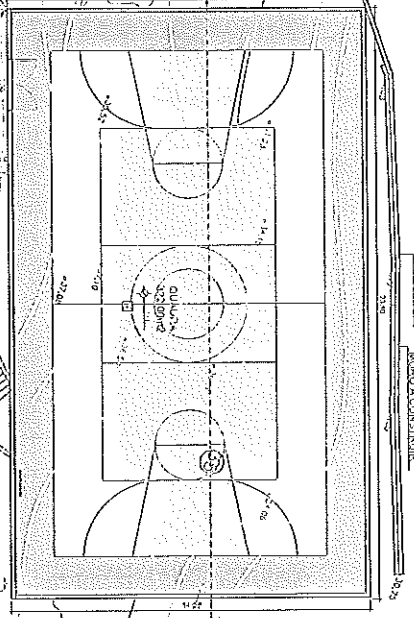




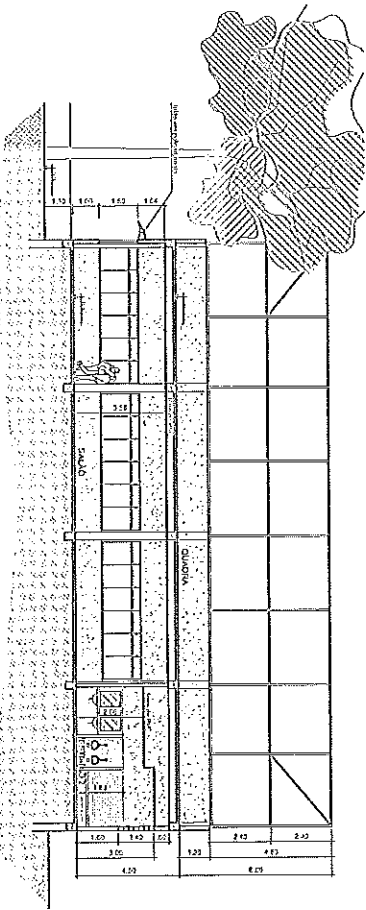
Estado do Rio de Janeiro
MUNICÍPIO DE ANGRA DOS REIS
Secretaria Municipal de Administração
Superintendência de Gestão de Suprimentos

ANEXO VI PROJETO BÁSICO

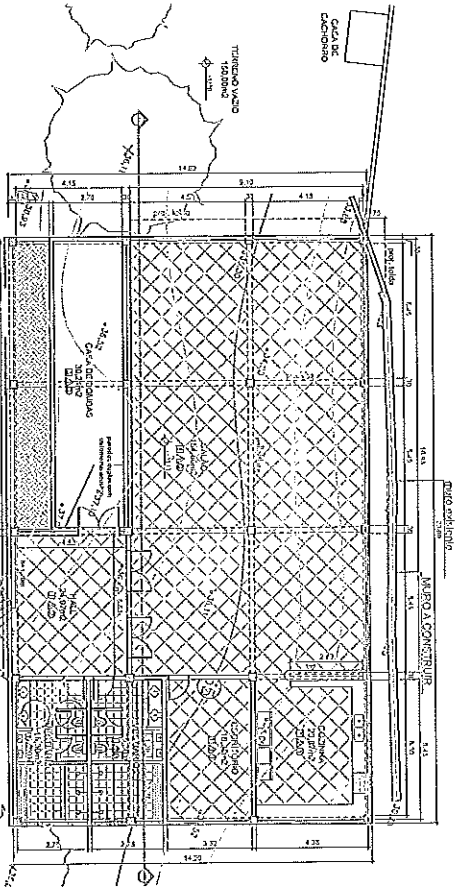
[]	ALVENARIA
[]	CONCRETO
[]	OUTROS



1 Planta Baixa - Praça e Quadra

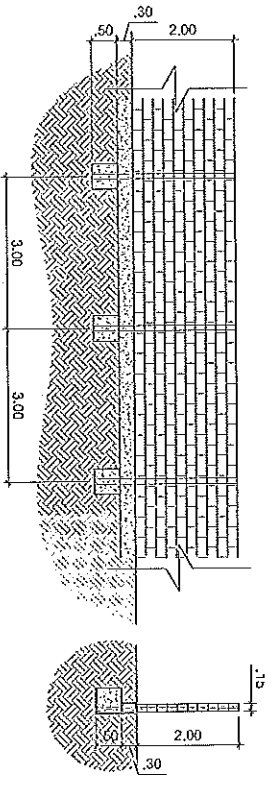


3 Corte



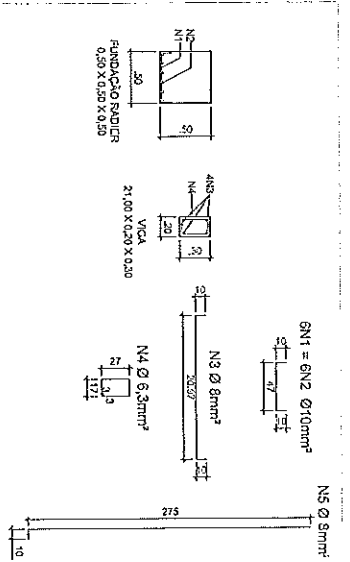
2 Planta Baixa - Salão Comunitário

LEGENDA DE MATERIAIS	LEGENDA DE TERMOIS
1. ALVENARIA	1. CONCRETO
2. MADEIRA	2. CERAMICA
3. FERRO	3. PINTURA
4. VIDRO	4. PAVIMENTO
5. OUTROS	5. OUTROS



4 Corte Frontal do Muro

5 Corte Transversal do Muro



6 Detalhe das Ferragens do Muro

PREFETURA MUNICIPAL DE ANGRA DOS REIS
SECRETARIA MUNICIPAL DE OBRAS, TRANSPORTES E TRAFEGO
DIRETORIA DE INTERCOMUNICACAO

REFORMA DA GUARDA E SALAO PAROQUIAL
Muro da Caixa d'Água

UNICA